



Buffer tanks

DHW buffer tank WPS

Application

Gas, oil, pellets, heat pump, district heating

Standard design

- Enamelling in certified quality according to DIN 4753, part 3-6
- With anode, sensor gauge, thermometer, plug for electric heater and flange
- Can be optionally upgraded with an electric heating element or an electric heating flange respectively

Insulation (white, silver)

60 mm Neodul-Plus-insulation (up to 500 l)

100 mm fleece insulation (from 800 l)



WPS 305

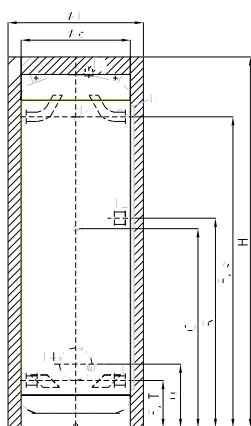
5 years warranty

Article			WPS 155 ¹⁾	WPS 205 ¹⁾	WPS 305 ¹⁾	WPS 405 ¹⁾	WPS 505 ¹⁾
Capacity	litre ca.		151	201	303	431	507
Max. working temperature	°C		95	95	95	95	95
Max. working pressure	bar		10	10	10	10	10
Insulation	mm		60 Neodul-Plus	60 Neodul-Plus	60 Neodul-Plus	60 Neodul-Plus	60 Neodul-Plus
Dimensions:							
Diameter incl. insulation	D	mm	610	610	610	710	710
Diameter tank	d	mm	500	500	500	600	600
Height cold water connection	E/T	mm	215	215	215	250	250
Height hot water connection	F/S	mm	668	912	1422	1420	1690
Height circulation	G	mm	465	620	910	910	1121
Height storage tank	H	mm	970	1215	1740	1730	1990
Tilting dimension	W	mm	1150	1172	1650	1696	1946
Height flange	O	mm	290	290	290	335	335
Height plug for electric heater	R	mm	612	648	958	960	1171
Connections:							
Cold water/hot water	1/2	Ga	5/4	5/4	5/4	6/4	6/4
Circulation	3	Ga	3/4	3/4	3/4	3/4	3/4
Load circuit flow/return	8/9	Ga	5/4	5/4	5/4	6/4	6/4
Plug for electric heater	12	Gi	6/4	6/4	6/4	6/4	6/4
Flange	14	NW	116	116	116	116	116
Sensor tubes	15	∅ mm	10	10	10	10	10
Thermometer	16		•	•	•	•	•
Anode	19	Ga	5/4	5/4	5/4	5/4	5/4
Weight (empty)		kg	100	105	110	130	160
Part No. (white)			42 155000 191	42205000 191	42305000 191	42405000 191	42505000 191
Part No. (silver)			42 155000 192	42205000 192	42305000 192	42405000 192	42505000 192
Gross price	Euro		875,-	944,-	1040,-	1282,-	1424,-

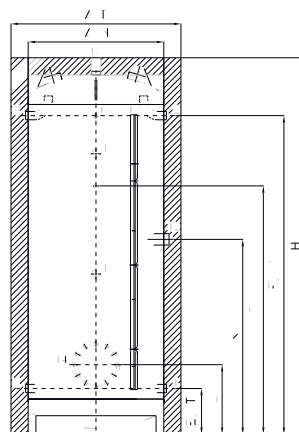
¹⁾ Available from 07/2014

Ga = male thread, Gi = female thread

Accessories	155-205	305	405-505	805-3005	Part No.	Euro
External current anode Correx-up with red. piece 1 1/4 - 3/4 x 400 with potentiostat	●	●			39789	184,-
External current anode Correx-up G 1 1/4" x 830 with potentiostat			●	●	400170	211,-
Electric back-up heater 2-6 kW, 230/400 V, R 1 1/2" x 500 ET with controller and limiter		●	●		400397	333,-
Electric back-up heater 3 kW, 230 V, G 1 1/2" x 400 ET with controller and limiter	●	●	●		400149	233,-
Electric back-up heater 7,5 kW, 400 V, G 2" x 700 ET with controller and limiter				●	403011	362,-
Electric heating flange 3/4/6 kW, 230/400V for flange ∅ 180	●	●	●		400489	362,-
Electric heating flange 9/18 kW, 400V for flange ∅ 280				●	400488	833,-
Knuckle feet M 10 (set of 3 pieces)	●	●	●		400433	10,-
Controller box with temperature controller 230 V	●	●	●	●	400201	147,-



WPS 305



WPS 805

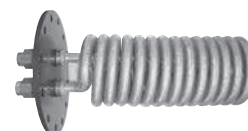
Article			WPS 805 ¹⁾	WPS 1005 ¹⁾	WPS 1505 ¹⁾	WPS 2005 ¹⁾	WPS 3005 ¹⁾
Capacity	litre ca.		830	990	1535	2010	3035
Max. working temperature	°C		95	95	95	95	95
Max. working pressure	bar		10	10	6	6	6
Insulation	mm		100-fleece	100-fleece	100-fleece	100-fleece	100-fleece
Dimensions:							
Diameter incl. insulation	D	mm	990	990	1200	1400	1450
Diameter tank	d	mm	790	790	1000	1200	1250
Height cold water connection	E/T	mm	266	266	350	395	390
Height hot water connection	F/S	mm	1540	1855	1730	1625	2220
Height circulation	G	mm	1209	1446	1315	1250	1740
Height storage tank	H	mm	1880	2195	2150	2090	2680
Tilting dimension	W	mm	1891	2227	2232	2237	2775
Height flange	O	mm	405	405	440	500	495
Height plug for electric heater	R	mm	995	1135	1150	1150	1505
Connections:							
Cold water/hot water	1/2	Ga	6/4	6/4	2	2	2
Circulation	3	Ga	3/4	3/4	1	1	1
Load circuit flow/return	8/9	Ga	6/4	6/4	2	2	2
Plug for electric heater	12	Gi	2	2	2	2	2
Vent	13	Gi	5/4	5/4	5/4	5/4	5/4
Flange	14	NW	205	205	205	205	205
Sensor clamp	15		•	•	•	•	•
Thermometer	16	Gi	•	•	•	•	•
Anode	19	Ga	5/4	5/4	5/4	5/4	5/4
Weight (empty)		kg	218	252	292	382	464
Part No. (white)			42805000195	42100500195	42150500195	42200500195	42300500195
Part No. (silver)			42805000196	42100500196	42150500196	42200500196	42300500196
Gross price	Euro		1783,-	2232,-	3468,-	4468,-	5493,-

¹⁾ Available from 07/2014

Ga = male thread, Gi = female thread

Cu fin-tube heat exchanger WPS (straight standard design)

- Assembled on flange plate for flange Ø 280, incl. a set of screws, washers and sealing
- With union connector (electrical separation type)
- Max. working pressure 25 bar, max. working temperature 95 °C, exchanger outside tin-plated.



Typ	Heating area ca. m ²	Ø ca. mm	Installation depth mm	Connection thread	ca. Performance 10/45				Part No.	Euro
					55 °C kW	70 °C kW	80 °C kW	90 °C kW		
WTN 13 S	1,30	140	430	R ¾	7	16	22	28	400394	On demand
WTN 18 S	1,80	170	450	R ¾	10	22	33	42	400762	On demand
WTT 23 S	2,30	180	510	R 1	13	30	42	53	400764	On demand
WTT 27 S	2,70	180	530	R 1	17	36	52	70	400766	On demand
WTT 31 S	3,10	180	560	R 1	20	42	61	77	400768	On demand
WTT 46 S	4,60	180	790	R 1	23	52	72	90	400770	On demand

Remark: Please consider the installation depth in relation to the tank diameter.